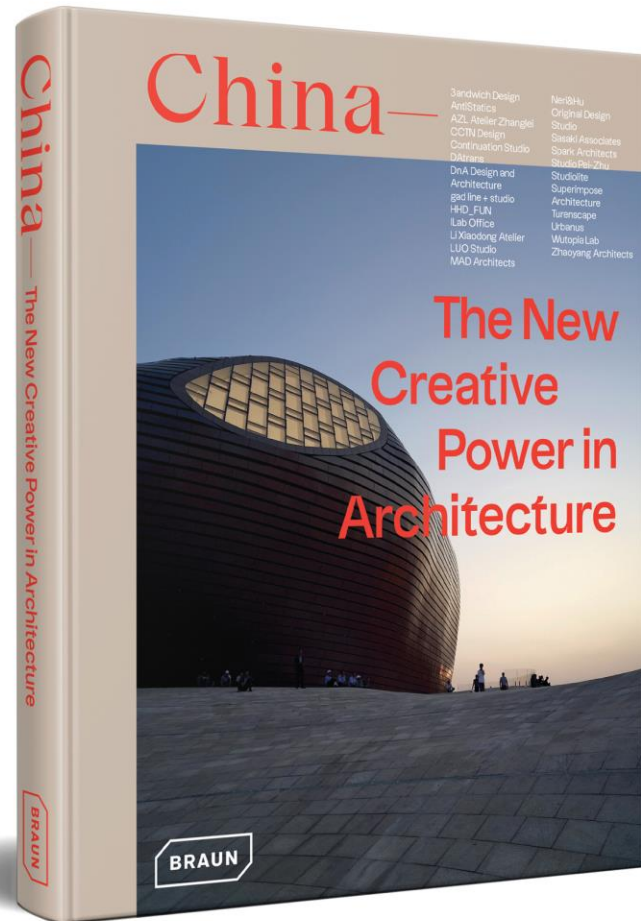


BRAUN



China: The New Creative Power in Architecture

Chris van Uffelen

PRICE GBP:	£39.95
FORMAT CM:	21 x 27 cm
PAGES:	192
ILLUSTRATIONS:	400
RELEASE DATE:	Oct 20
LANGUAGE:	English
ISBN:	978-3-03768-267-8
BINDING:	Hardcover

A4

BOOK FORMAT



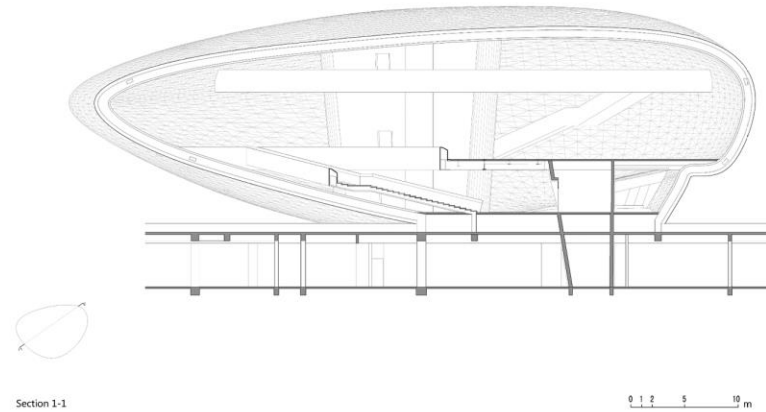
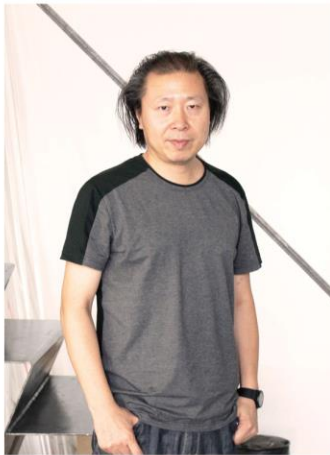
New creative input for the world

Increased global importance of building culture from China

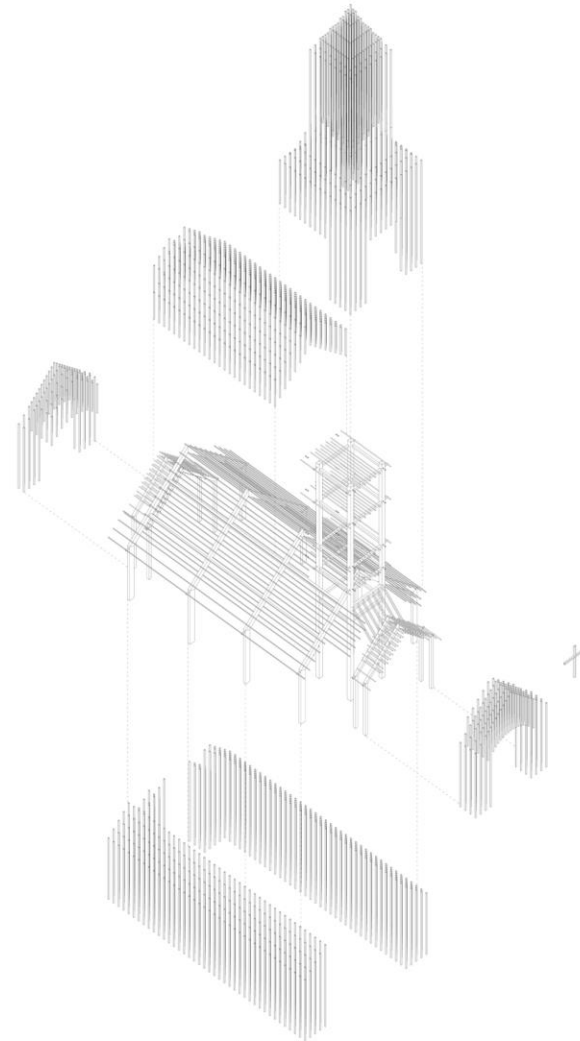
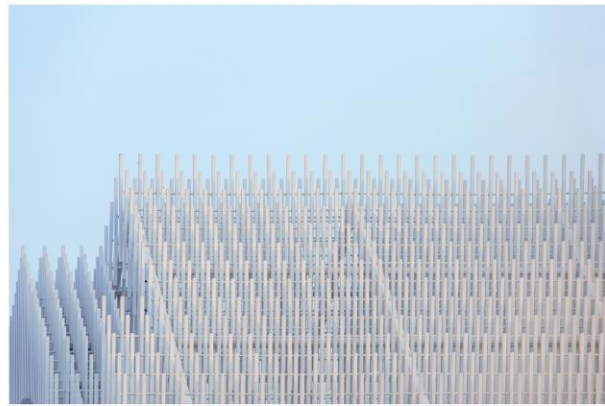
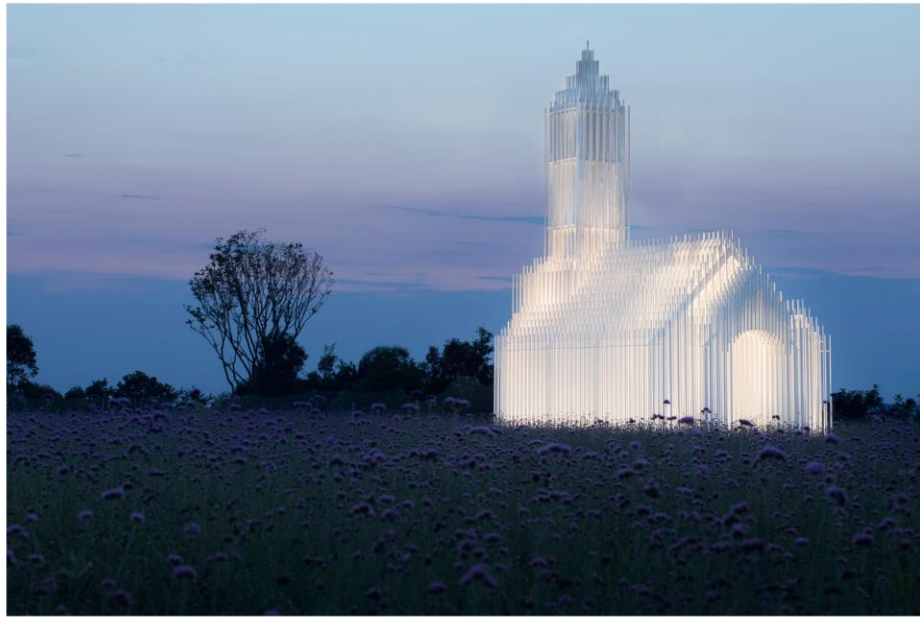
Wide variety of styles, methods and typologies

Sorted by architects

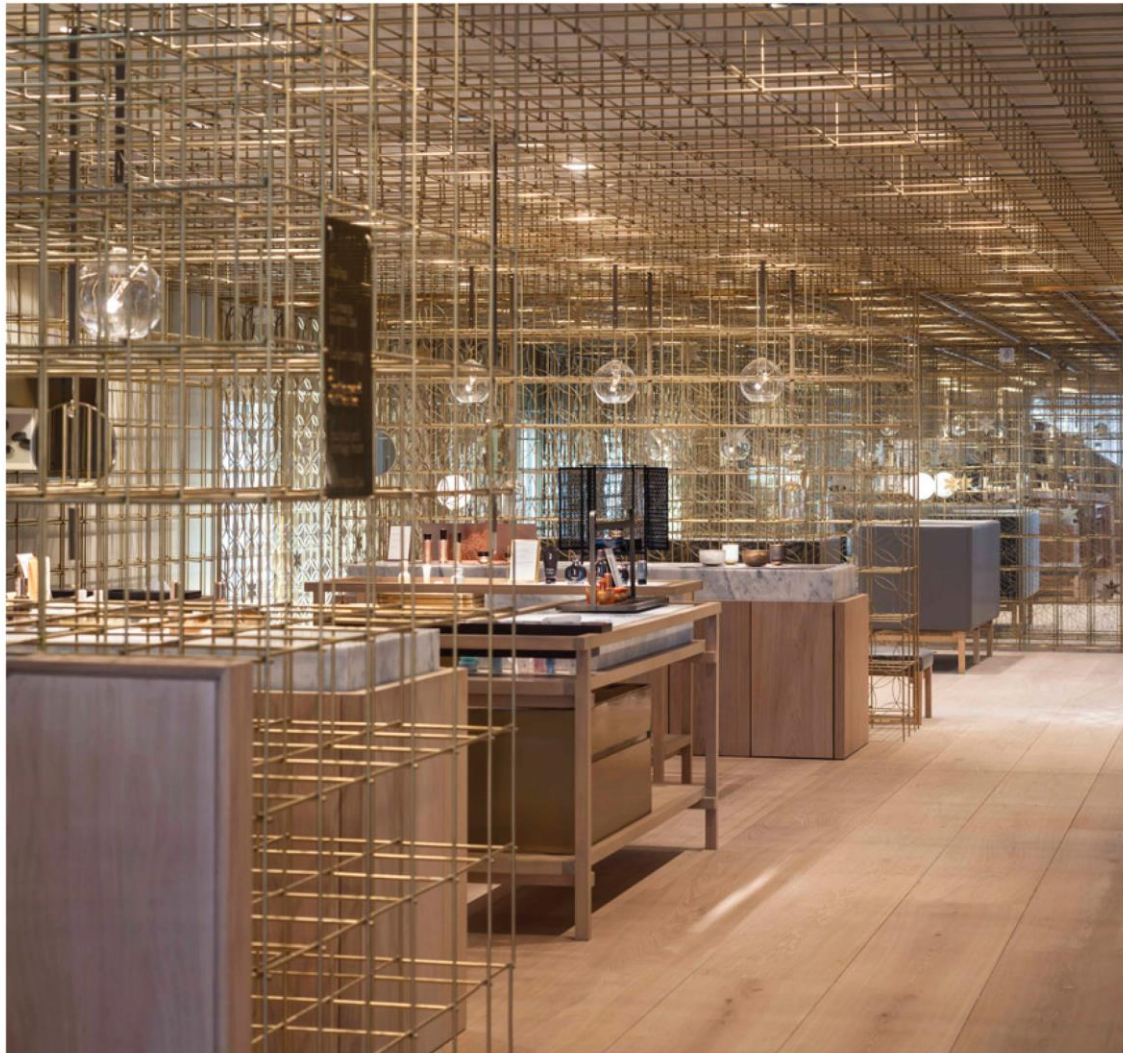
Main works are presented by images and drawings, text and facts



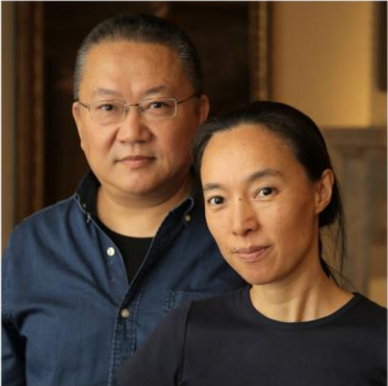
OCT Design Museum in Shenzhen, China (Studio Pei-Zhu)



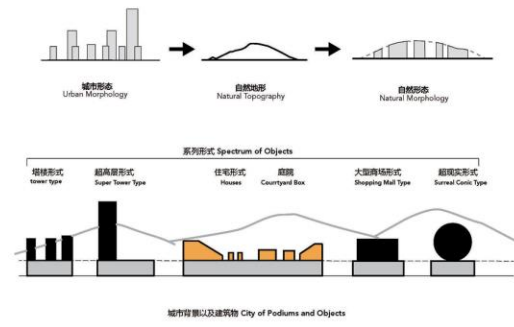
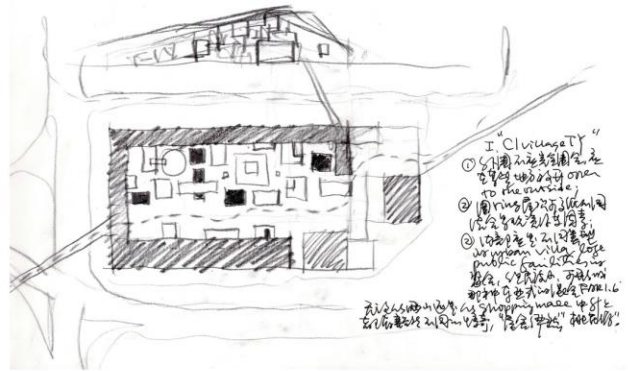
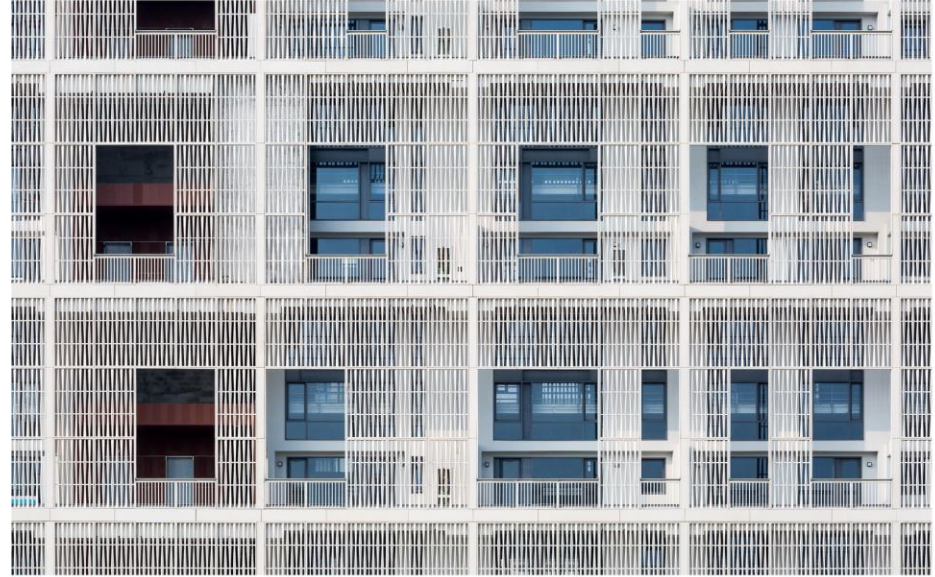
Sino-French Park Church in Chengdu, China (Shanghai Dachuan Architects)



Sulwhasoo Flagship Store in Seoul, Korea (Neri&Hu)



Ningbo History Museum, China (Amateur Architecture Studio)



SHUM YIP UpperHills in Shenzhen, China (Urbanus)



Ben de Lange, Carolyn Leung, Ruben Bergambagt



— Superimpose Architecture

Superimpose
Architecture

Beijing and Shanghai
China

24
25

Superimpose Architecture is a creativity driven studio. The focus is on applying problem solving tactics to visible or invisible complexities of the physical world resulting in strategic, well-balanced and bold design solutions. The practice has grown sustainably into a boutique size firm with 15 employees since early 2016. Superimpose' is not only the office name, it also reflects our design methodology and philosophy, collaborative attitude, team structure and knowledge sharing mentality: "To place one thing over another as an addition, in such a way that all layers are still evident".



a



b



c



d

- a_ H2O in HekI, Jiangsu, China (2016)
- b_ The Valley, Hangzhou, China (Concept Design)
- c_ SOHO 3Q in Chengdu, China (2016)
- d_ Sky-Cellar, Beijing, China (2016)



CO2

Location
Beijing, China

Type of use Pavilion

Completion 2018

Main material
lorem ipsum, dolit aqua, semper

Client Shard Island

Gross floor area 15 m²

Photographer
Mirko, Beijing Shardisland Technology Co., Ltd. and Superimpose



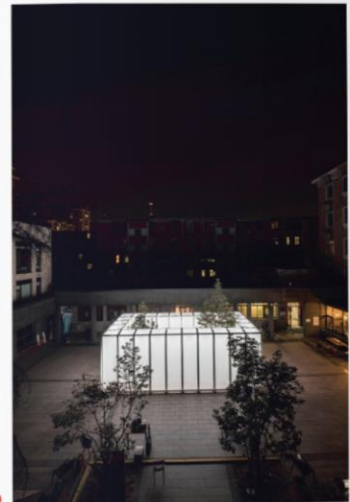
Superimpose
Architecture

Beijing and Shanghai
China

24
25



a



b

Superimpose Architecture designed the CO2 Pavilion for the Beijing Design Week 2018 as an enclosed place for isolation and contemplation from urban chaos, and as a tridimensional projection screen for multidisciplinary performances on the multi-layered exterior. Ultimately architecture, music, visual art and light art work hand-in-hand to consolidate awareness about the conditions of the cities we inhabit.

During the 10th edition of the international Beijing Design Week event, Superimpose Architecture is invited by the Yan Jing Lane community to design a site-specific architecture installation within its grey brick courtyard in Chaoyang District.

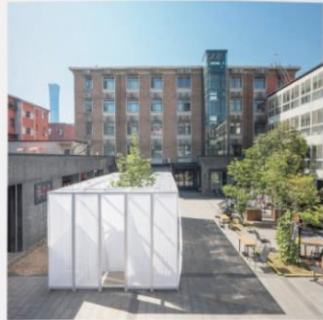
a_Lorem:
Ut ultricies lorem ut mi.
Praesent vel augue. Donec
interdum.

b_Impeum:
consectetur adipiscing
elit suspendisse

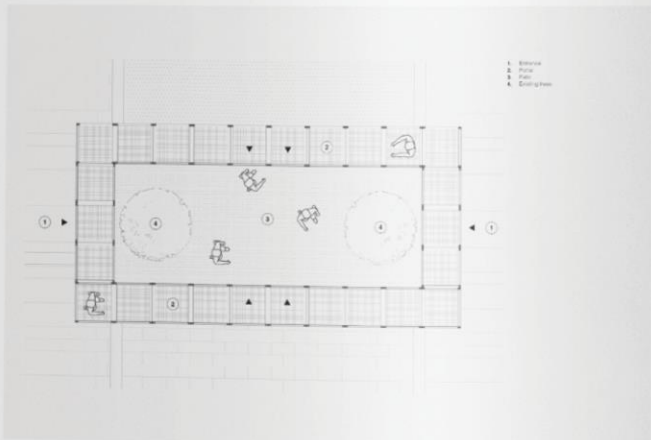


C02

a_ Lorem ipsum dolor sit amet
b_ Suspendisse nulla
c_ Nunc sollicitudin ante ac tellus
d_ Ut sollicitudin
e_ Cras sapien, in risa erat, pellentesque ut



a



b

Superimpose
Architecture

Beijing and Shanghai
China

24
25



c
d c

